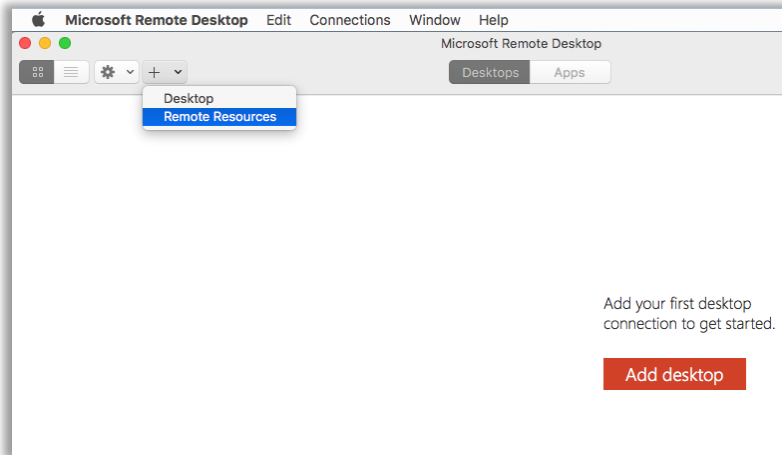
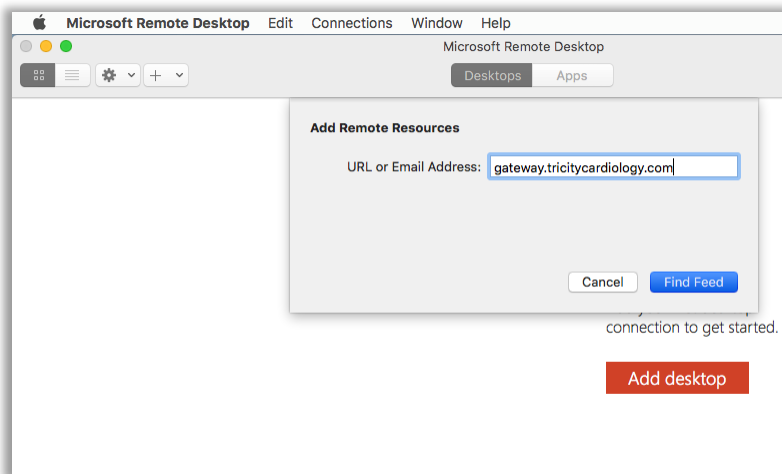


Remote Access for Mac

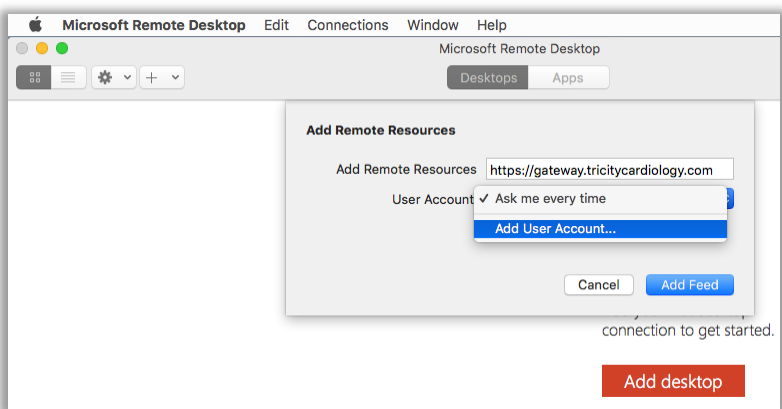
1. Download the app Microsoft Remote Desktop 10 from the Mac Store.
2. Open Microsoft Remote Desktop, and select + Remote Resources.



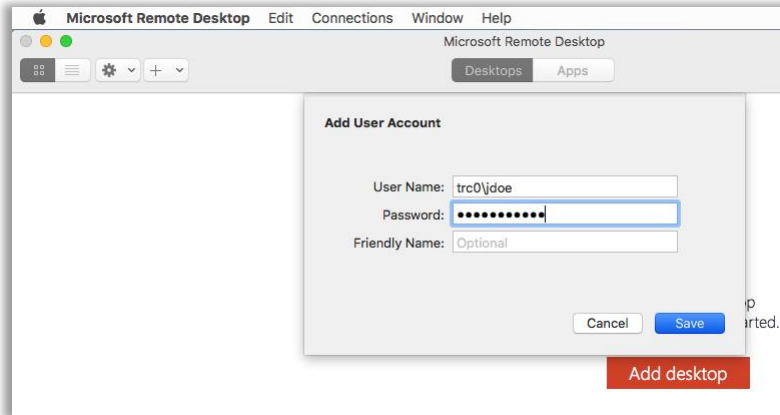
3. Add Remote Resource **gateway.tricitycardiology.com** and select Find Feed.



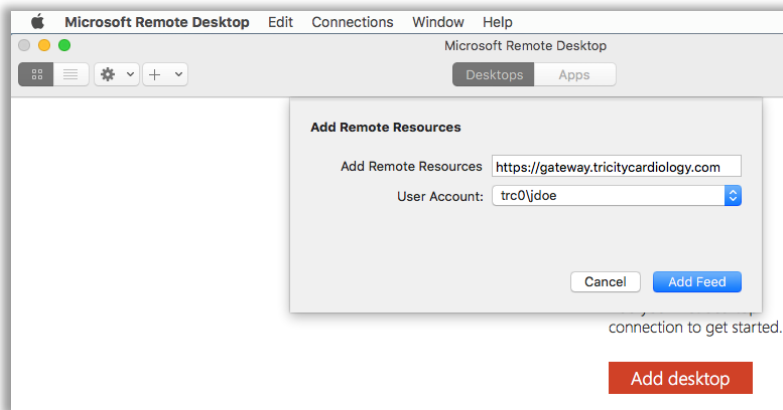
4. Select Add User Account and add your Windows credentials.



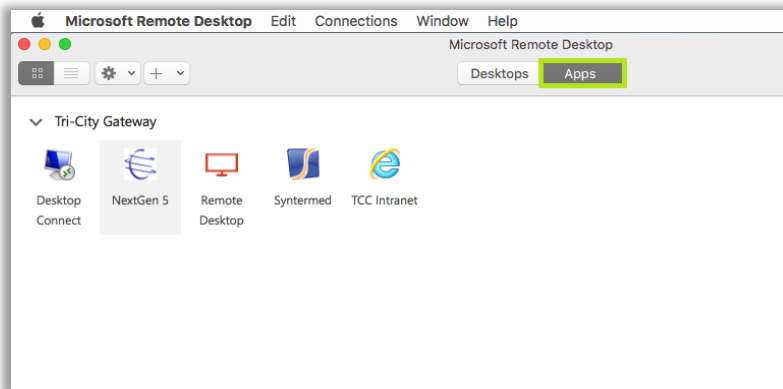
5. Enter your Windows credentials **trc0\username** and then your password, and select Save.



6. Verify Remote Resource URL, and User Account are correct, and select Add Feed.



7. Select the Apps list and confirm that Tri-City Gateway is listed.



8. Double click to Open your App from the list.